

# FURY

## M700



  
**Piper**<sup>®</sup>

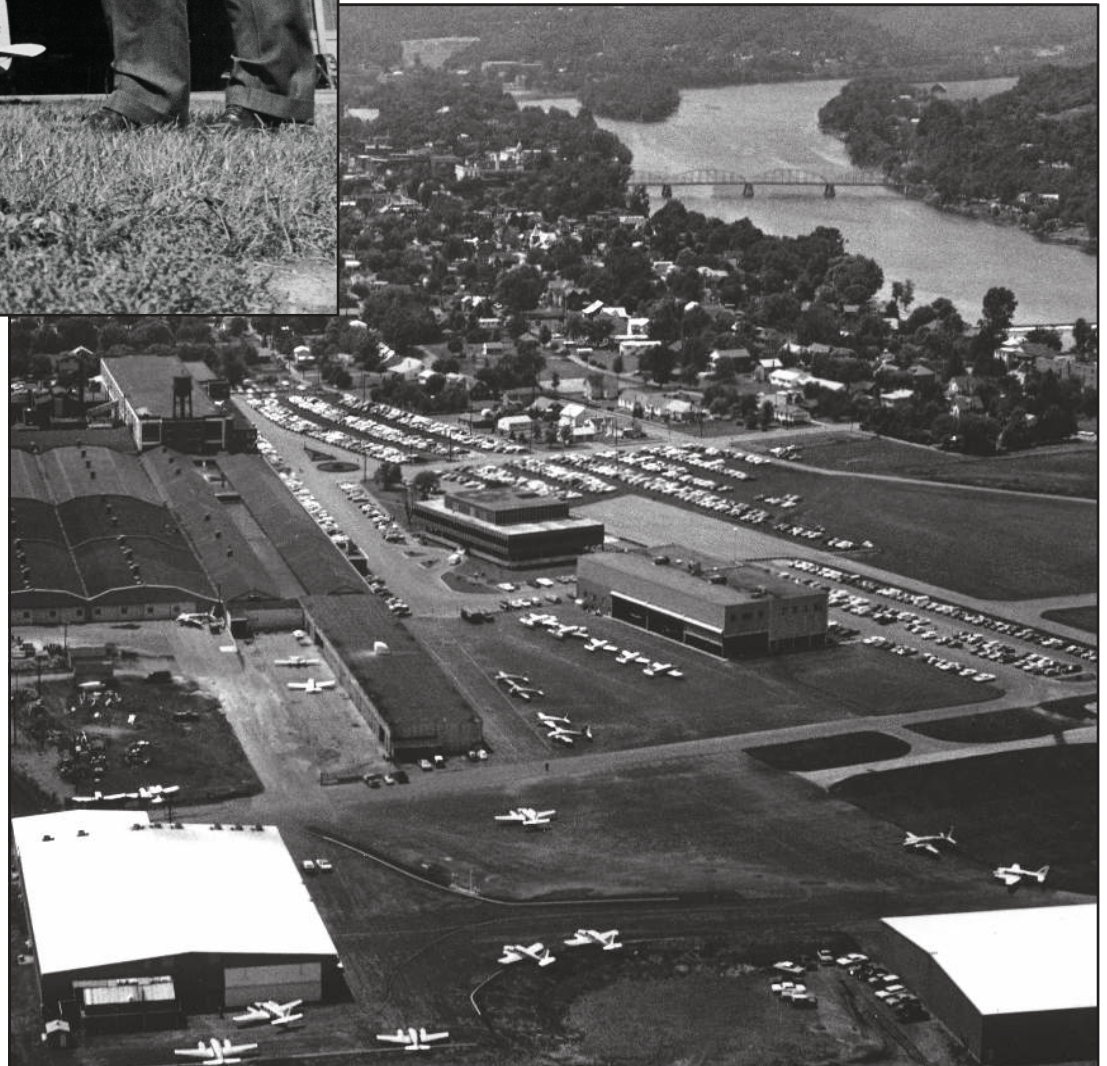




## A LEGACY TAKES SHAPE OVER TIME

### A GLOBAL LEGACY OF LEADERSHIP

Since 1937, Piper Aircraft has defined the heart and mind of aviation worldwide. With over 134,000 aircraft flying across six continents, Piper has earned its place as a global leader in performance, reliability, and innovation. From the legendary Piper Cub, which revolutionized personal aviation, to the state-of-the-art M700 FURY, Piper continues to set the standard for pilots and travelers who demand the best.





## UNRIVALED SPEED • UNMATCHED POWER • ABSOLUTE CONTROL.

The Piper M700 FURY isn't just an aircraft—it's an extension of your achievements and priorities. Featuring a 300+ knot max cruise speed, 30% faster rate of climb, increased range, and improved runway performance, the M700 FURY is a significant upgrade over its predecessor. These improvements enhance performance and efficiency, making it a noteworthy advancement in its class. Combine this with advanced features such as Garmin Autoland, Autothrottle, and Piper engineering the M700 FURY speaks uniquely to the demands of the owner-pilot.

All six-seats deliver refined, first-class comfort, allowing you to work, relax, or simply enjoy the ride.







## A PURCHASE YOUR CFO WILL ENDORSE

For the business traveler, the M700 FURY isn't just about performance—it's an asset that enhances efficiency while delivering a strong bottom line.

Experience the freedom of direct flights on your schedule, eliminating the inconveniences of commercial travel. With a cruise speed exceeding 300 knots, the M700 FURY provides you with the ultimate luxury—more time for what truly matters.

Strengthen your financial reserves with unparalleled operating cost savings ranging from 30% to 60% when compared to other aircraft on the market. Our advanced aircraft solutions are engineered for efficiency without sacrificing quality or performance.





## RANGE MAPS



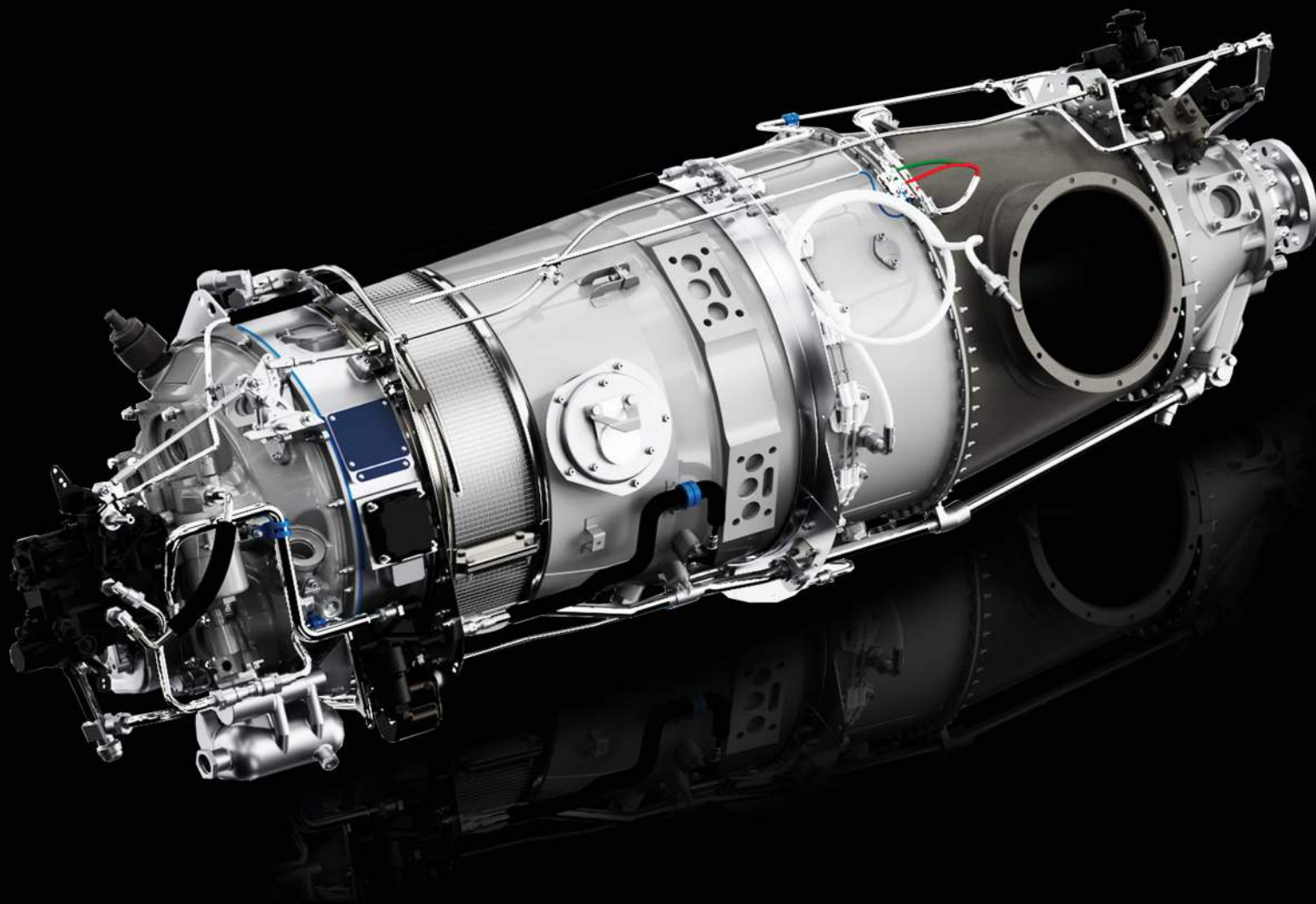
Fort Lauderdale to Midland  
1,206 nm nautical miles (normal cruise)  
Pilot plus three passengers



Fort Lauderdale to Barranquilla  
965 nautical miles (normal cruise)  
Pilot plus five passengers



London to Calabria  
1,030 nautical miles (normal cruise)  
Pilot plus four passengers



## THE HEART OF THE FURY

### UNCOMPROMISING POWER

The PT6A-52 engine delivers an unrelenting 700 shaft horsepower, ensuring unparalleled field performance and high-altitude power. It's the most trusted, efficient, and versatile engine in general aviation—designed for those who demand the best.



# WORLD CLASS FEATURES

## Propeller

Hartzell 5-Blade  
Constant Speed  
Full Feathering  
Reversible

## Fuel Capacity Useable

260 US gal | 984

## Engine

Pratt & Whitney PT6A-52  
Flat-Rated at 700 SHP

## Dimensions

Wingspan: 43.2 ft | 13.2 m  
Height: 11.5 ft | 3.5 m  
Length: 29.7 ft | 9.1 m  
Cabin Volume: 165 cu ft | 4.67 cu m  
Cabin Width: 4 ft 1 in | 1.25 m  
Cabin Length: 12 ft 3 in | 3.76 m

## Weight

Maximum Takeoff Weight:  
6,000 lb | 2,722 kg

Maximum Ramp Weight:  
6,050 lb | 2,744 kg

Standard Empty Weight:  
3,730 lb | 1,692 kg

Standard Useful Load:  
2,320 lb | 1,052 kg

Max Range  
1,852 nm | 3,430 km

Max Approved Altitude  
30,000 ft | 9,144 m

Takeoff Distance  
(Over 50' Obstacle)  
1,994 ft | 607 m

Max Cabin Differential  
5.5 psi

Landing Distance  
(Over 50' Obstacle)  
1,950 ft | 594 m

Max Cruise Speed  
301 ktas | 557 km/hr

## Avionics

### Upgraded Garmin® G3000® Avionics Suite

#### Standard Equipment

- GARMIN G3000 AVIONICS SUITE with HALO Safety System
- GFC™ 700 Digital Autopilot
- Dual GTC 575 Touchscreen Cockpit Management Units
- GMA™ 36B Digital Audio Panel
- GTX™ 345D Diversity Transponder
- Flight Into Known Icing (FIKI)
- GWX™ 75 Weather Radar
- GDL™ 60 Datalink
- Garmin PlaneSync™
- Garmin GI-275 Standby
- Integrated Digital Cabin Pressurization
- PiperAire Air Conditioning
- Bose A30 Headsets (2)
- USB A & C Charging Ports
- Rosen Visors
- CAS Link Checklist & Taxiway Routing Enablements

#### HALO Safety System

- Garmin Emergency Autoland (fully autonomous)
- Auto Throttle
- Radar Altimeter
- Enhanced AFCS Enablement
- SurfaceWatch™
- Synthetic Vision (SVT™)
- SafeTaxi®
- TerminalTraffic

## Support

- Pilot Initial Training Course through a Piper Authorized Training Center
- Airframe: 5-Year Piper Limited Warranty Program
- Avionics: 5-Year Garmin Warranty
- Powerplant: 7-Year Pratt & Whitney Warranty
- Propeller: 5-Year Hartzell Warranty
- Piper's Ultimate Care Program

## Optional Equipment

#### Premium Package:

- 110 volt AC Power Outlet (cabin)
- Lee Aerospace CoolView Windows
- GSR 56 Iridium Transceiver (US or International Talk, Text & Weather)

#### Awareness Package:

- TAWS-B (Terrain Awareness and Warning System)
- Second transponder: Dual Antennas GTX 345D & GTX 335 Digital Transponder
- GTS 855 Traffic Advisory System - TCAS/ACAS I (includes GTS™ 825)

#### All Weather Package:

- GDL 69A SiriusXM Satellite Weather
- GWX 8000 StormOptix
- GWX-500 StormScope

#### International Package:

- Jeppesen ChartView
- GSR 56 Iridium Transceiver - International Talk, Text, Weather
- BendixKing KN 63 Remote DME



\*For additional information on package options, contact your local Piper Dealer. Package options and pricing subject to change.

# FURY

## M700







  
**Piper**<sup>®</sup>



# NEXT LEVEL AVIONICS

## UNMATCHED SAFETY, CONNECTIVITY, AND CONTROL

The M700 FURY is equipped with the most advanced avionics in general aviation - the cutting-edge Garmin G3000 suite. What sets the Piper FURY apart is its integration of the HALO Safety System, featuring Garmin Emergency Autoland and Garmin's PlaneSync™ technology. These advancements elevate safety, connectivity, and ease of operation, offering pilots an unmatched flying experience.

### HALO SAFETY SYSTEM FEATURES: GARMIN EMERGENCY AUTOLAND

This fully autonomous landing system can be activated manually or automatically if the system senses pilot incapacitation. Autoland's algorithms consider runway length, time, wind, fuel, weather and glide path to determine the best airport for landing. The system notifies ATC while passengers are updated on aircraft position and landing time. Key automatic functions include: FIKI, flap extension and gear extension. Once the aircraft touches the runway, the braking system will activate and bring the aircraft to a complete stop. Then the engine will shut down and passengers are instructed on how to safely exit the aircraft.

### AUTOMATIC LEVEL MODE

Returns the aircraft to a wings-level attitude with zero vertical speed at the push of a button.

### ELECTRONIC STABILITY & PROTECTION

Prevents the onset of stalls, spins, steep spirals and loss of control. ESP creates a soft barrier to flying outside the performance envelope.



### HYPOXIA RECOGNITION WITH AUTOMATIC DESCENT MODE

The system is operative when the autopilot is engaged and the aircraft cabin altitude exceeds 14,900 feet pressure altitude. After a period of inactivity the pilot is prompted for response. If no response is detected the aircraft will initially descend to 14,000 feet. If the pilot does not immediately recover, Emergency Autoland will automatically activate at 14,100 feet.

### AUTOTHROTTLE

Autothrottle is controlled through the flight management system with preset power or speed profiles. The pilot also has the option to set a target speed for the autothrottle to capture from takeoff to the approach to landing phase.





## UPGRADED GARMIN G3000 AVIONICS SUITE

The M700 FURY comes standard equipped with the Garmin G3000, the most advanced avionics suite available for single-engine turboprop aircraft. Features like 60/40 split mode and enhanced map display bring invaluable situational information to the pilot. On approach, you no longer sacrifice your scan to look down at the approach plate. The high-resolution, dual-touchscreen controllers provide access to your: audio/intercom system, Checklists, flight plan entry and editing, weather, charts, and Taxiway Routing.

Avionic enhancements now include: 3D SafeTaxi®, synoptics page, stabilized approach alerts, the Glide Range Ring, providing increased situational awareness for the pilot in all phases of flight.

## PLANESYNC™

PlaneSync allows the pilot stay connected to with their aircraft from anywhere. Using an encrypted 4G LTE cellular or Wi-Fi connection, PlaneSync links remotely to the avionics through the Garmin Pilot™ app. The Connected Aircraft Management System performs automatic database updates and shows aircraft status remotely, before arriving at the aircraft.







# LUXURY ELEVATED

The EXP Package takes refinement to new heights. Custom interiors, premium leather, tri-tone seats and exclusive veneer finishes. Every detail is crafted for comfort, style, and distinction. Scan the QR code below to build your dream M700 FURY.



EMERGENCY OXYGEN  
IN DRAWER UNDER SEAT  
PULL MARK OUT OF DRAWER FULLY  
EXTEND EXTENSION PULL CORDS  
MAXIMUM DURATION: 15 MIN  
NO SMOKING WHILE IN USE  
10/20/2019 PIP



# ULTIMATE CARE • ULTIMATE CONFIDENCE

The purchase of a Piper M700 FURY includes five years of comprehensive maintenance, providing worry-free ownership. From scheduled inspections to 24/7 global support Piper's extensive service network ensures you fly more and stress less. Life's demands won't pause for maintenance and neither should you.

## The Ultimate Care Program Includes:

- All scheduled maintenance to 1,500 total flight hours or the aircraft's fifth annual inspection.
- Labor and parts for any mandatory Service Bulletins.

## Find a Service Center near you:

Piper Customer Support Hotline Domestic:

1-877-879-0275

International: +001-772-299-2141

## Global Customer Support

Customer support is available 24/7 for questions and concerns. For in-service product support and assistance, we offer a global network of more than 80 approved Piper Service Centers, all independently owned and operated. We also partner with Boeing and its network of more than 40 customer service centers to ensure parts and materials are available.

## Piper Warranty Program

Every New Piper M700 FURY comes with an industry leading warranty. Piper airframe and systems: 5-year/1,500-hour warranty, Garmin avionics: 5-year/1,500 hour warranty, Pratt & Whitney PT6A-52 powerplant: 7-year/2,500-hour warranty, Hartzell Propeller: 5-year/1,500-hour warranty on Hartzell products installed by Piper.

## Pilot Training

Qualified pilots will receive training from a Piper Authorized Training Center, including an academic ground school and aircraft-specific training. Flight time in your new aircraft may also be available.











**FURY**  
M700





[piper.com](https://www.piper.com) | 1.772.299.2403

© 2025 Piper Aircraft, Inc. | 2926 Piper Drive, Vero Beach, FL 32960 | 772.299.2403  
Piper M700 Fury, M700 Fury and Piper Fury are all registered trademarks of Piper Aircraft, Inc.